

MOSAIC

CONSULTING GROUP

Automated UltiPro Integrations

03.26.2020

INTRODUCTION:

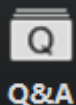
Michael Pearson

Technical Architect

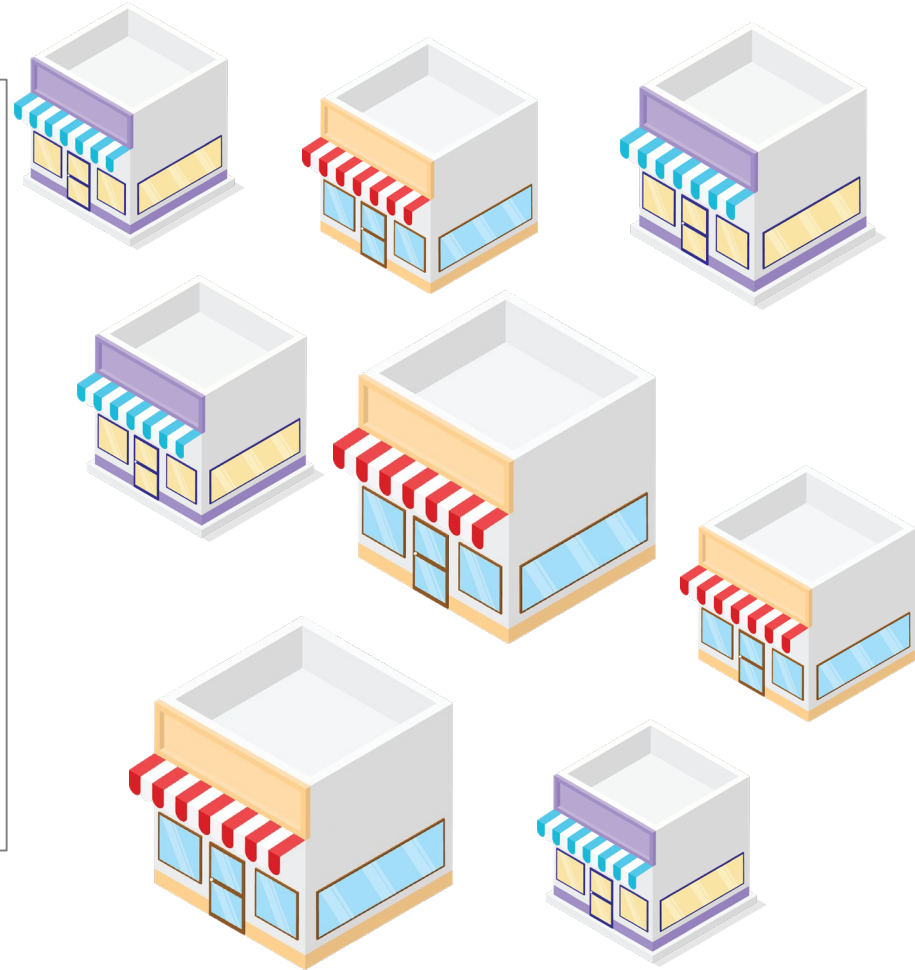
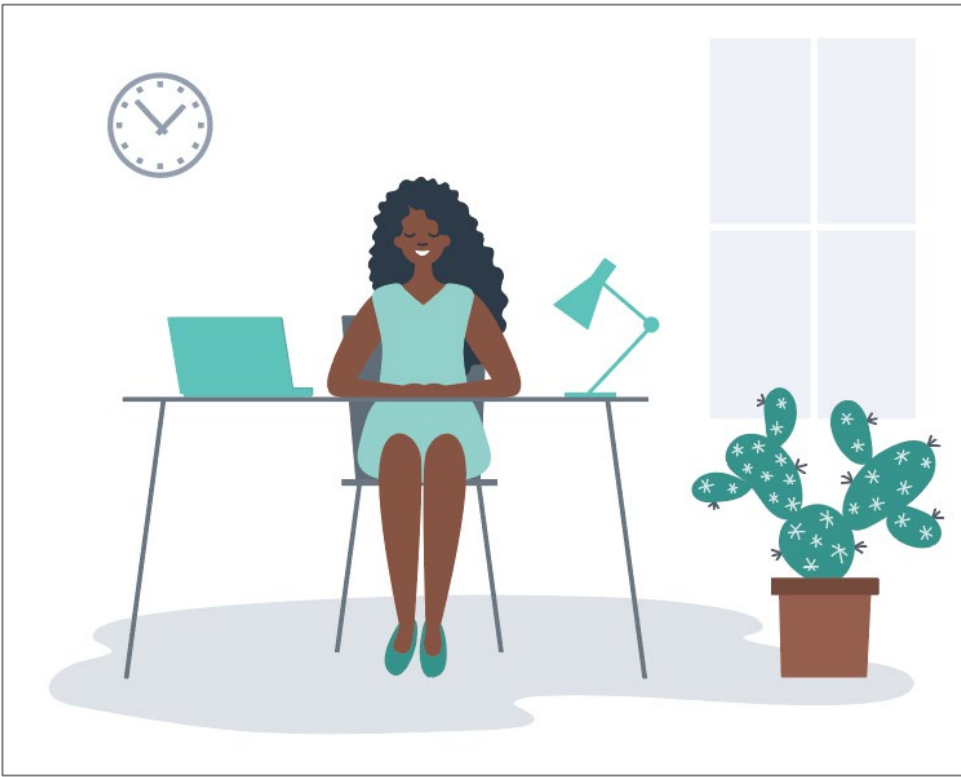
michael.pearson@mosaic-cg.com

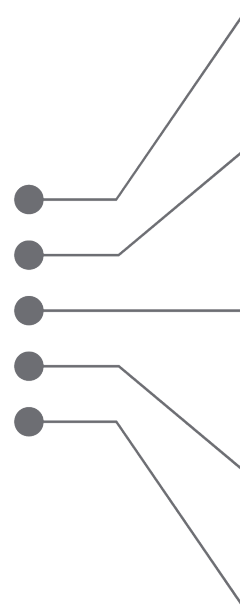
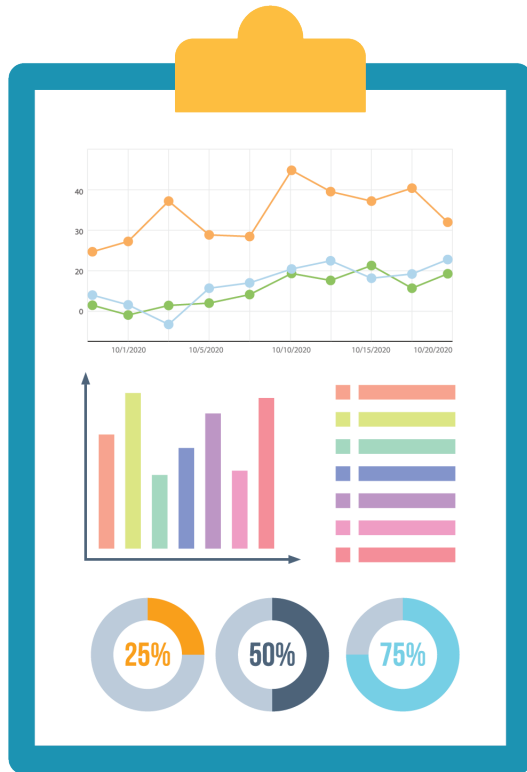
AGENDA:

- The Value of Automation
- Definitions
- UltiPro Capabilities for:
 - Extracting Data
 - Importing Data
- Integration Examples and Workflows



Feel free to ask questions during the session or use the Q&A icon in the bottom of your screen to submit them





- 1 **UltiPro[®]**
- 2 **TRAVEL** 
- 3 **RECRUITING & ONBOARDING** 
- 4 **LEARNING** 
- 5 **ACTIVE DIRECTORY** 

- **API:** A set of procedures allowing the creation of applications that remotely access the data and/or features of an application
- **API End Point:** A URL used in programming that accepts API requests
- **Middleware:** Software that acts as a bridge between 2 or more applications
- **Single Direction:** Data flowing in single direction
- **Bi-Directional:** Data flowing in two directions from an application



API

- [Common Endpoints](#)
- [Webservice Account Administration](#)
- Retrieving Data from Test Systems - Demo

COGNOS BI

- [Helps fill gaps](#)

UltiPro[®]

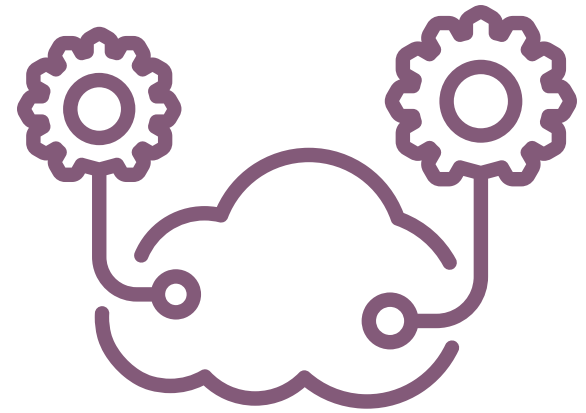


API

- [Common Endpoints](#)

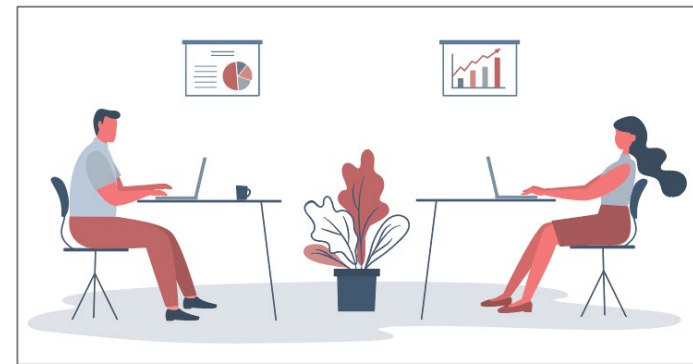
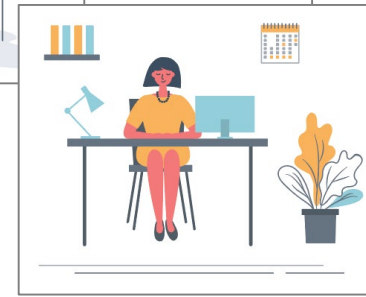
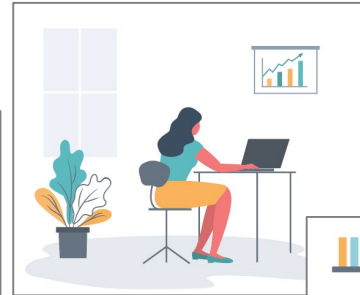
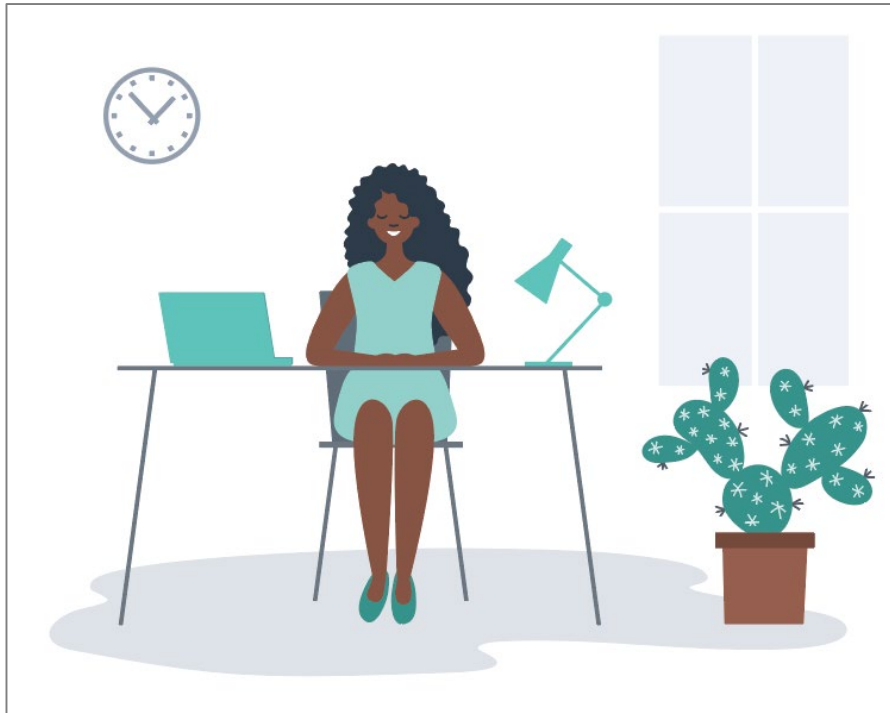
ULTIPRO WEB IMPORT TOOL

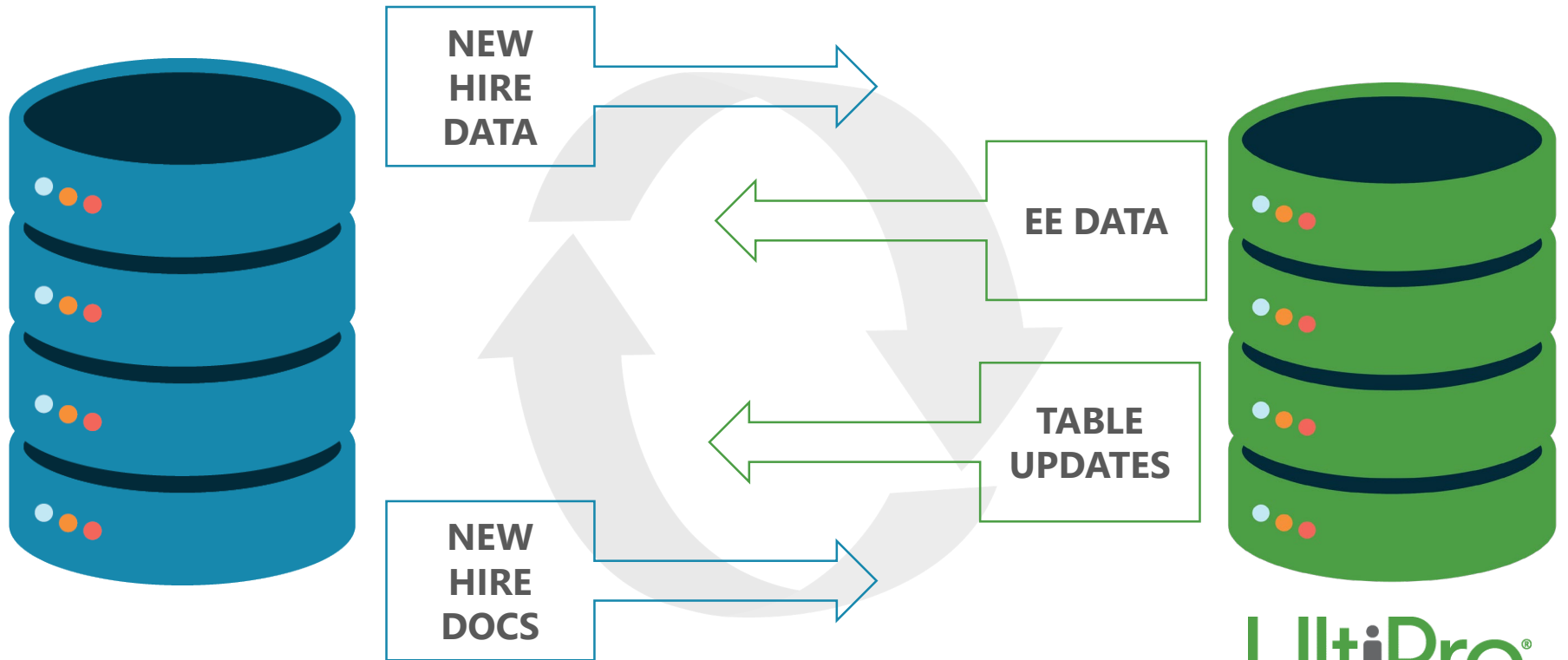
- Utilizes UltiPro Web Business Processes
- Allows for basic code to code translations



UltiPro[®]

PUTTING THE PIECES TOGETHER





PUTTING THE PIECES TOGETHER



MOSAIC
CONSULTING GROUP

QUESTIONS?